

WINDOW

10 MODELS

- Fixed Window
- Inward Opening, Single Vent 31mm
- Inward Opening, Single Vent 41mm
- Inward Opening, Single Vent 59mm
- Inward Opening, Double Vent 31mm
- Inward Opening, Double Vent 41mm
- Inward Opening, Double Vent 59mm
- Inward Opening, Double Integrated Vent 31mm
- Inward Opening, Double Integrated Vent 41mm
- Inward Opening, Double Integrated Vent 59mm
- Outward Opening, Double Vent 75.5mm

Download:



OPTIONS INSIDE THE MODEL

BUILDING CONNECTION

- Type D
- Parameters to transform into Type A, B or C

OPTIONS FOR TYPE D

- Bavette
- Couvre-Joints
- Clipable
- Tapées

DESIGN VARIANTS

- Functional
- Renaissance
- Softline
- Block Frame

DIMENSIONS

- Height and width element
- Visible width frame
- Visible width vent
- Panel thickness
- Shutter roll height

FEATURES

- Sill
- Shutter

OPENING DIRECTION

- DIN R
- DIN L
- Tilt

MATERIALS

- Color inside/outside profile
- Panel material
- Shutter roll material

LEVEL OF DETAIL

- Only bounding boxes

WINDOW DOOR

2 MODELS

- Inward Opening, Single Vent 59mm
- Inward Opening, Double Vent 59mm

Download:



OPTIONS INSIDE THE MODEL

BUILDING CONNECTION

- Type D
- Parameters to transform into Type A, B or C

OPTIONS FOR TYPE D

- Bavette
- Couvre-Joints
- Clipable
- Tapées

DESIGN VARIANTS

- Functional
- Block Frame

DIMENSIONS

- Height and width element
- Visible width frame
- Visible width vent
- Panel thickness
- Shutter roll height

FEATURES

- Shutter

OPENING DIRECTION

- DIN R
- DIN L

MATERIALS

- Color inside/outside profile
- Panel material
- Shutter roll material

LEVEL OF DETAIL

- Only bounding boxes

BIM (Building Information Modelling)

REYNAERS ALUMINIUM NV/SA

Oude Liersebaan 266 • 2570 Duffel
t +32 15 30 85 00 • f +32 15 30 86 00
www.reynaers.com • info@reynaers.com



GENERAL BIM REYNAERS

Using Building Information Modeling (BIM), building information can be shared between all participants like designers, architects, engineers, fabricators ...

Architects can use the Reynaers BIM models from the start of the building design, generating better visualization and window schedules with detailed info of the used elements.

The actual BIM models and families are based on 3 types of building connections.

The on-line zip-files include all available configurations of the system and are available within the architect website.

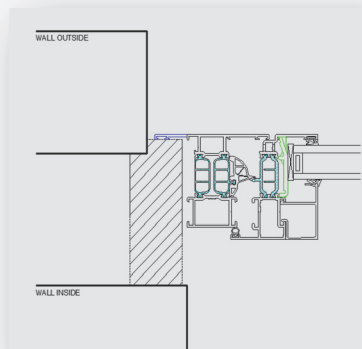
BUILDING CONNECTIONS

Type A-B-C

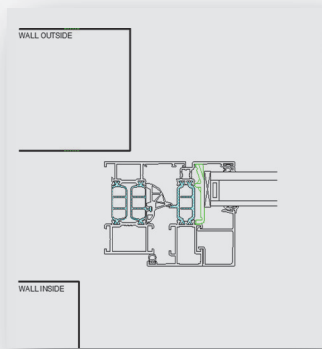
Between countries, there are differences in how a window is placed into the wall. Our BIM models are based on these differences.

- Type A : Opening wall exterior > Opening wall interior
- Type B : Opening wall exterior < Opening wall interior
- Type C : Opening wall exterior = +/- Opening wall interior

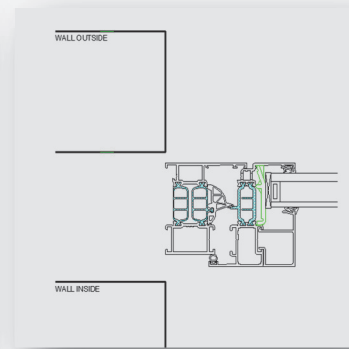
TYPE A



TYPE B



TYPE C



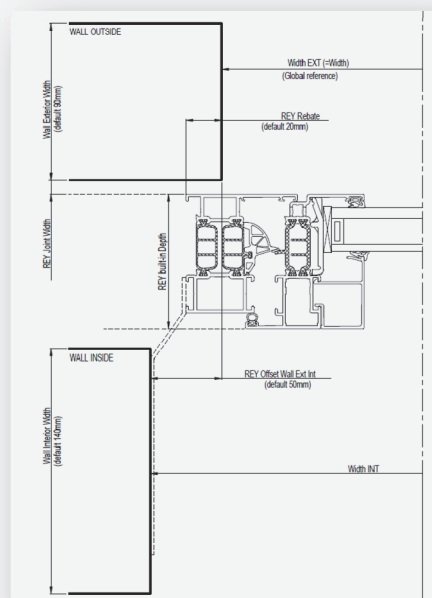
Building connection type B in detail > main parameters :

Width EXT : opening in outside wall
Wall exterior width : 90mm (default)

Width INT : opening in inside wall
Wall interior width : 140mm (default)

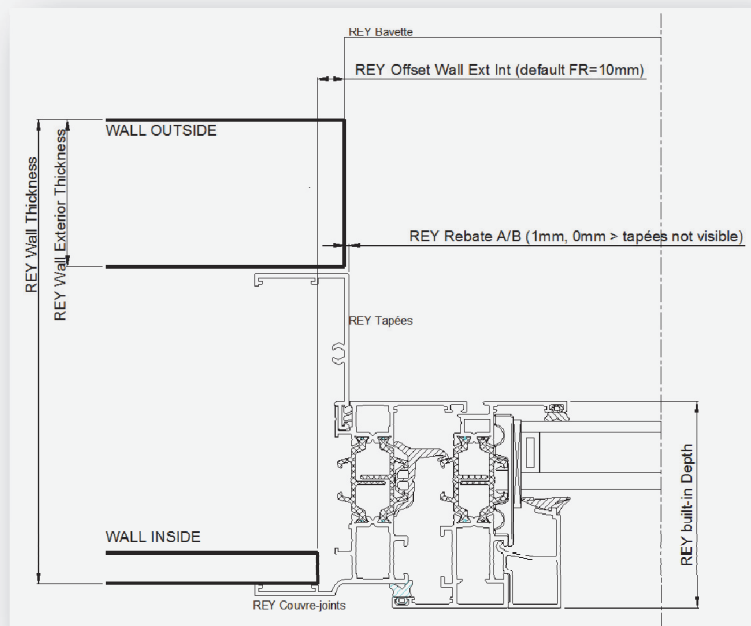
REY Rebate : distance between window and outside wall (default 20mm)
REY Offset Wall Ext Int : distance between inside and outside wall (default 50mm)
REY Joint Width : 5mm (default)

The configurations are all referenced to the inside of the outer wall !



Type D

BIM models of type D are based on type B, however the window configurations are now referenced to the inner wall ! Additional building connection parameters “REY Wall Thickness” and “REY Wall Exterior Thickness” are necessary to position the window configuration. Butt strips, facecaps and window sills are integrated using the graphical parameters REY Couvre-joints, REY Tapées and REY Bavette.

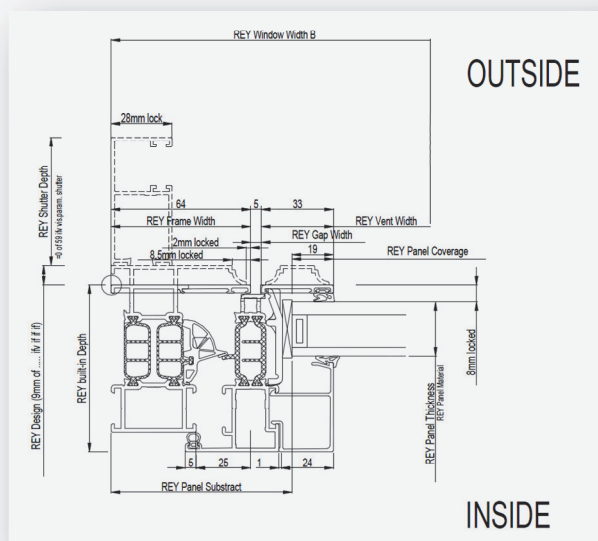
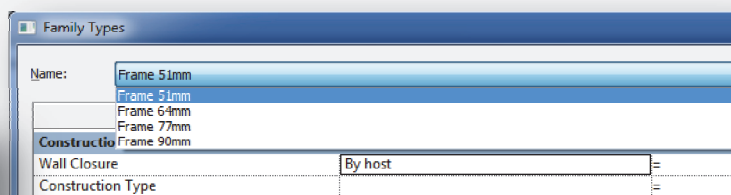


REYNAERS MODELS (FAMILIES)

B_Reynaers_CS 77 Functional_Window_Inside Opening_double_Vent 33mm.rfa (Autodesk Revit file)

B :	Type of building connection : Opening wall exterior < Opening wall interior
CS 77 Functional Window	System or sub-system name Element type
Inside Opening	Opening type
Double	Opening option (single/double)
Vent 33mm	REY Vent width (outside view)

Within each vent family, different outerframes (types within family) are available
REY Frame width 51-64-77-90mm (outside view)



Design parameters

REY Block Frame

REY Sill

REY shutter

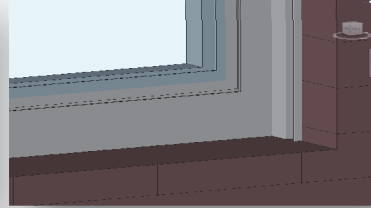
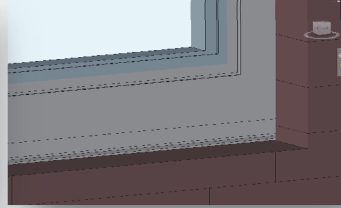
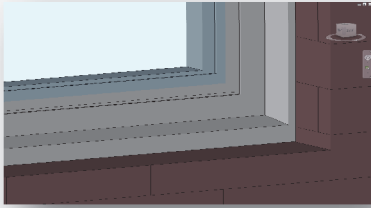
REY Panel Opening Direction

Blockframe variant

Profile for hidden drainage

Shutter

Plan view



REY Softline
REY Renaissance

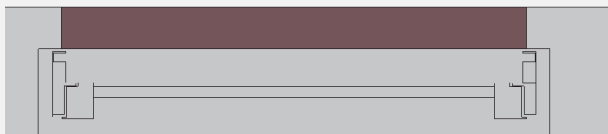
Softline variant (CS 77-So)
Renaissance variant (CS 77-Re)



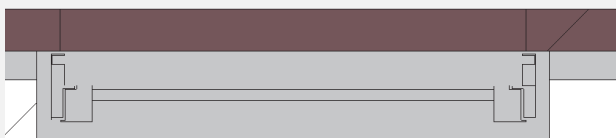
VIEWS

PLAN VIEW : course/medium - fine

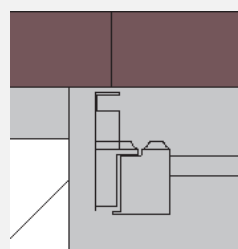
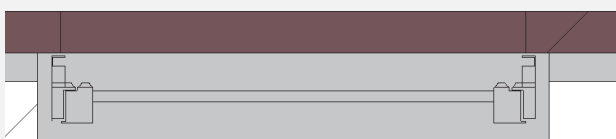
Course



medium + wall details



Fine + Design like softline/Renaissance



REYNAERS TEMPLATE

The Reynaers template only consists our schedule and a limited amount of materials

Reynaers schedule : Reynaers TOTAL

Using the Reynaers shedule “Reynaers TOTAL”, you will get detailed information of all configurations used in your project. Information like element width/height, Frame and vent width, panel dimensions, ... can be used by the fabricator as input for Reynapro.



Family and Type	Width EXT	Height EXT	Width INT	Height INT	REY Element Width	REY Element Height	REY Built-In Depth	REY Frame	Reynaers TOTAL	
									REY Vent Width	REY P REY
BE_Reynaers_CS 77 Functional_Window_Inside Opening_Single_Vent 33mm: Frame 51mm	1000	1000	1100	1078	1040	1015	77	51	33	
BE_Reynaers_CS 77 Functional_Window_Outside Opening_Double_Vent 76mm: Frame 26mm	1500	1500	1600	1778	1540	1480	77	26	76	
BE_Reynaers_CS 77 Functional_Door_Inside Opening_Brush_Single: Frame 68mm	1100	2100	1200	2183	1140	2220	68	68	76	
BE_Reynaers_CS 77 Functional_Door_Inside Opening_Brush_Double: Frame 68mm	2000	2100	2100	2183	2040	2220	68	68	76	

Reynaers materials

The most popular RAL colours are created as Reynaers materials and can be transferred to your project or your own template:
RAL 9005, RAL 7021, RAL 7016, RAL 9010, RAL 9001 and RAL 7039